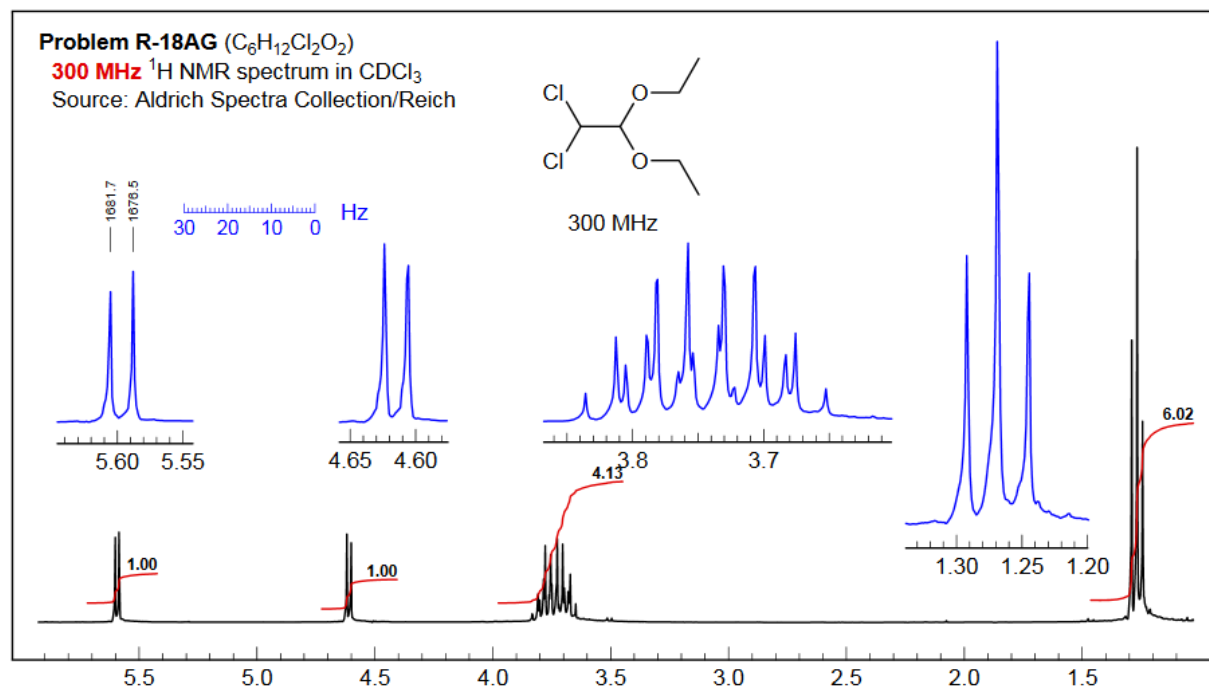
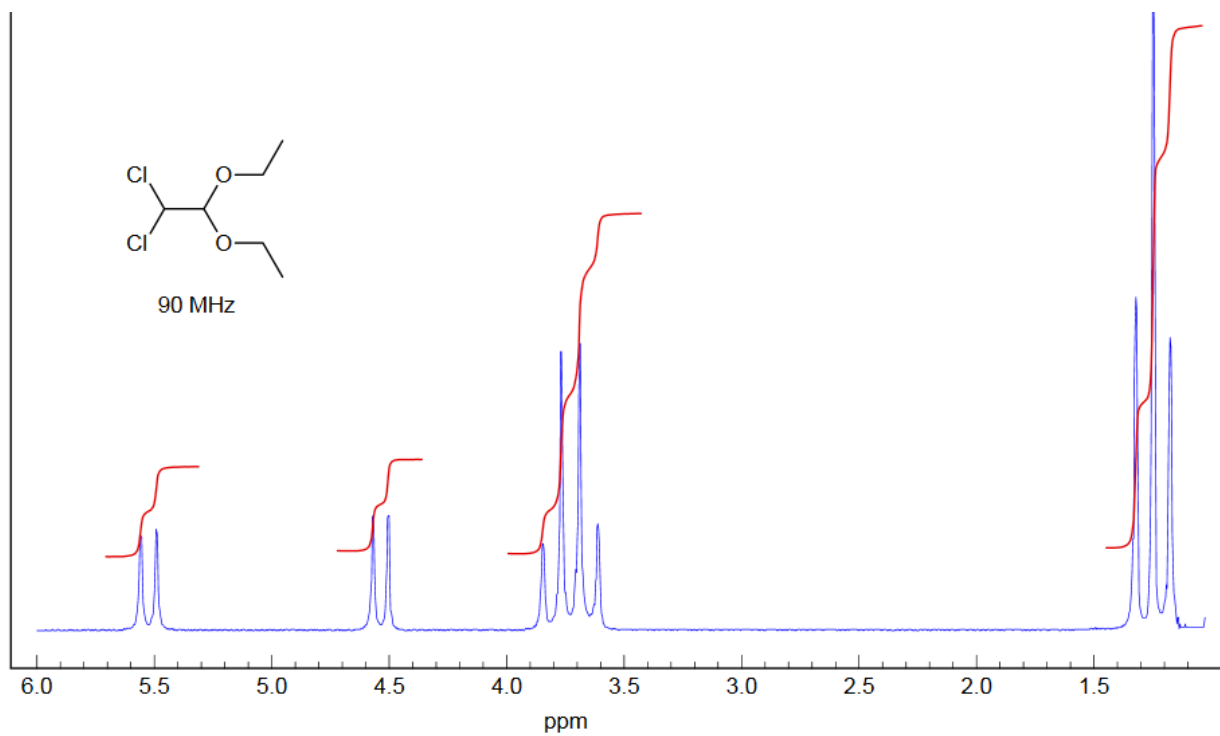
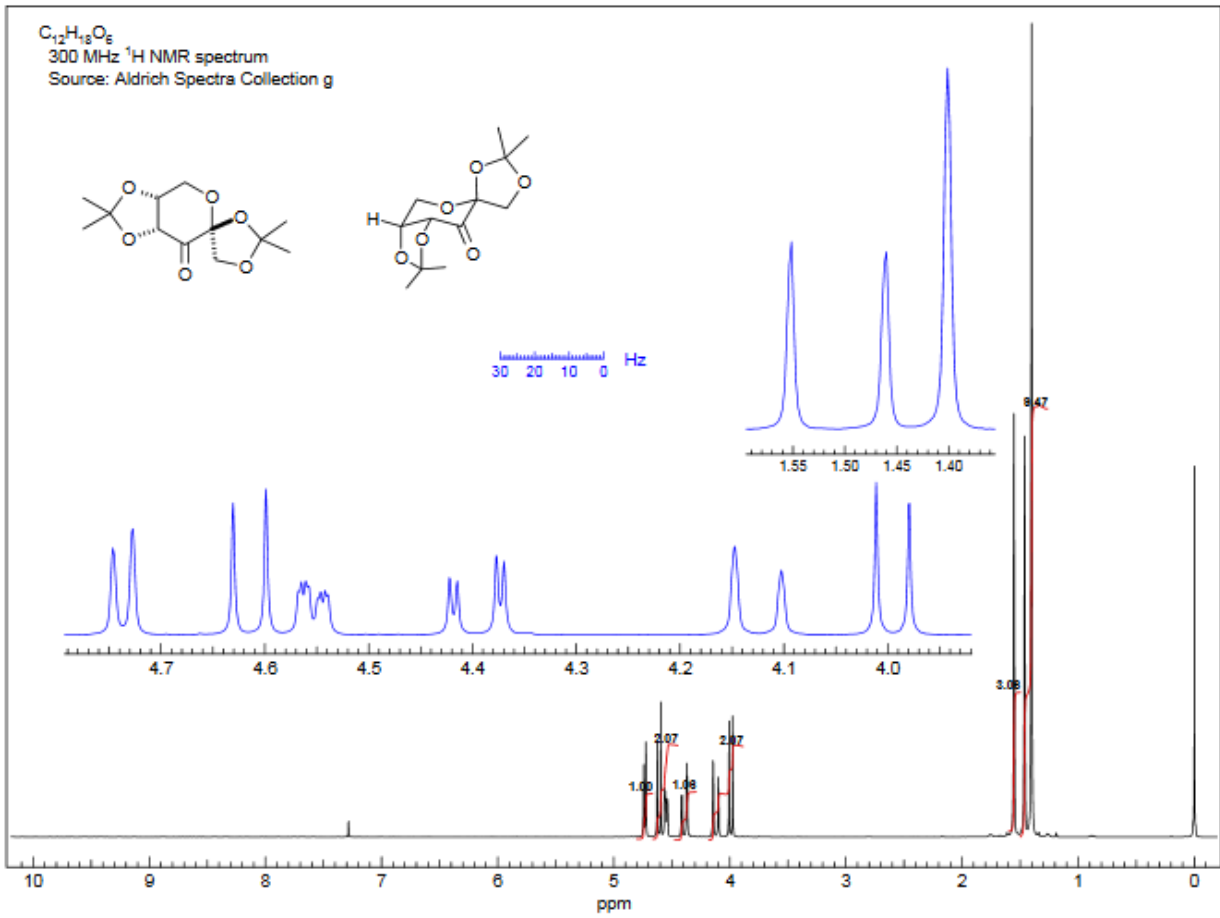
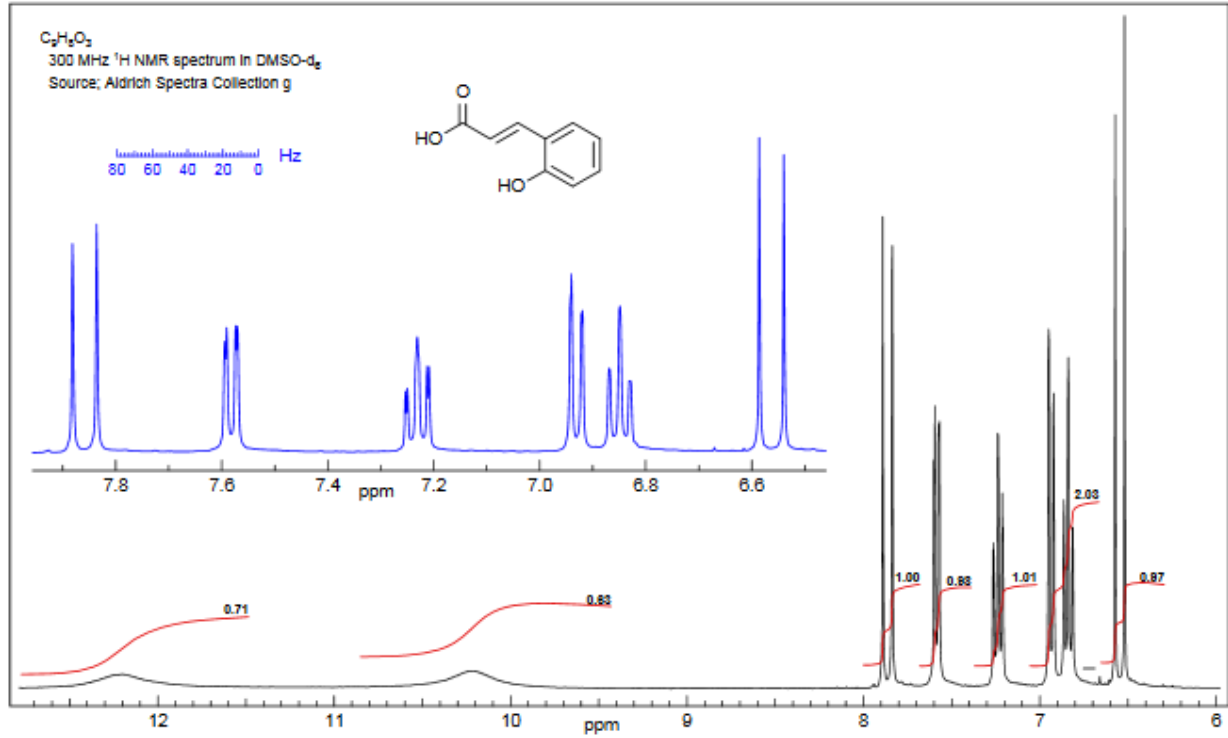
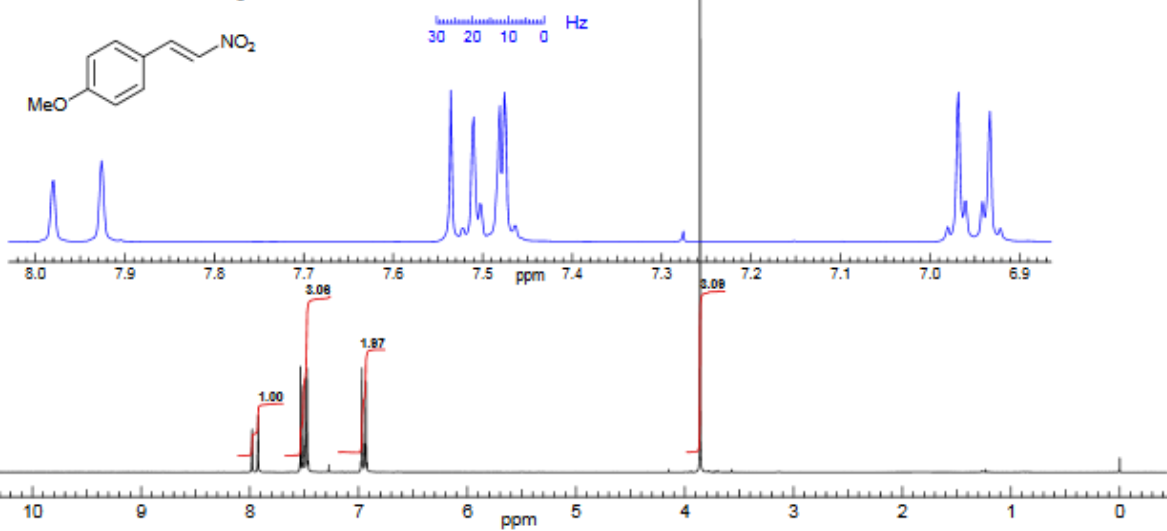


Problem # 21

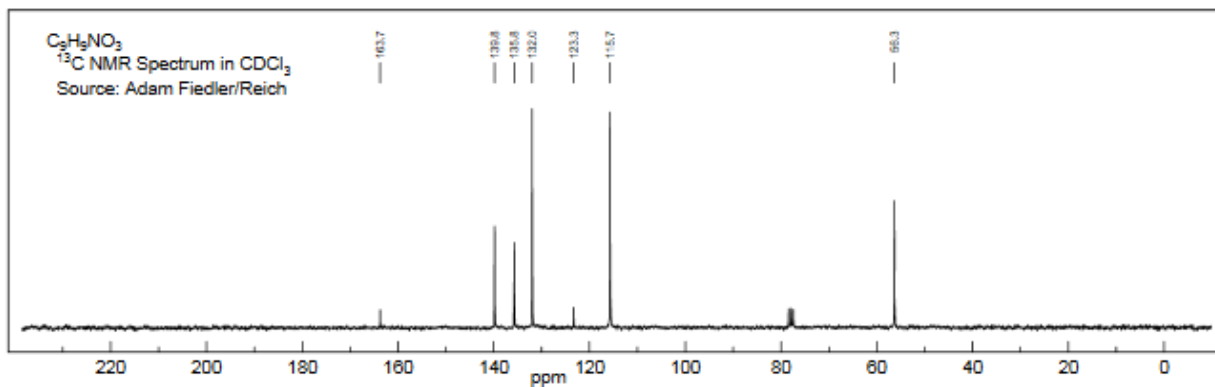




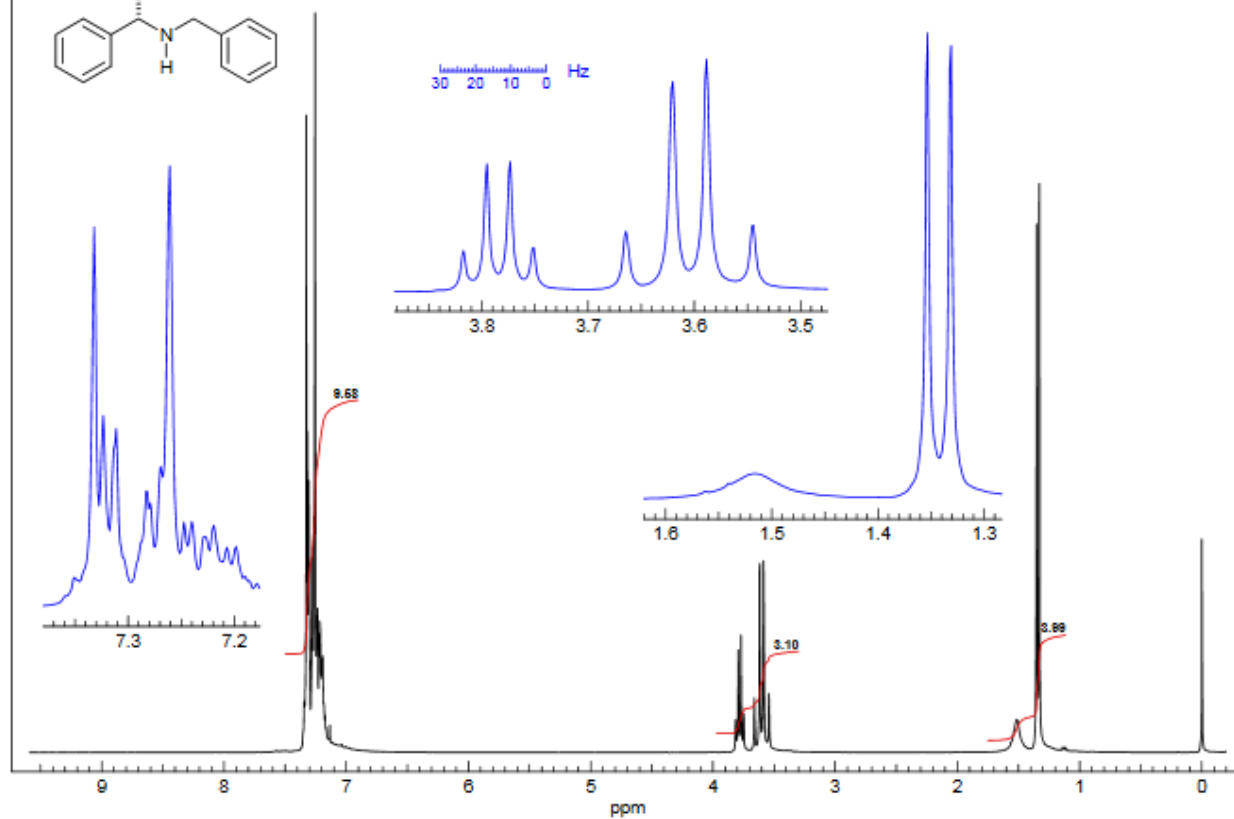
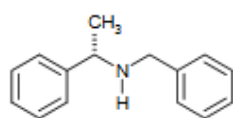
$C_9H_9NO_3$
250 MHz 1H NMR Spectrum in $CDCl_3$
Source: Adam Fiedler/Reich g



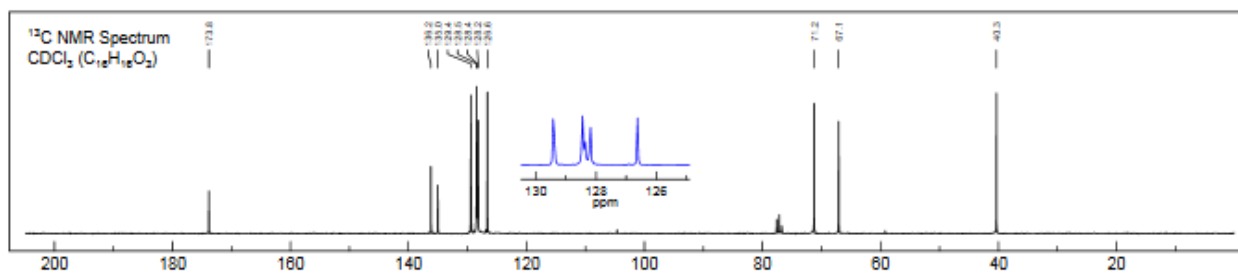
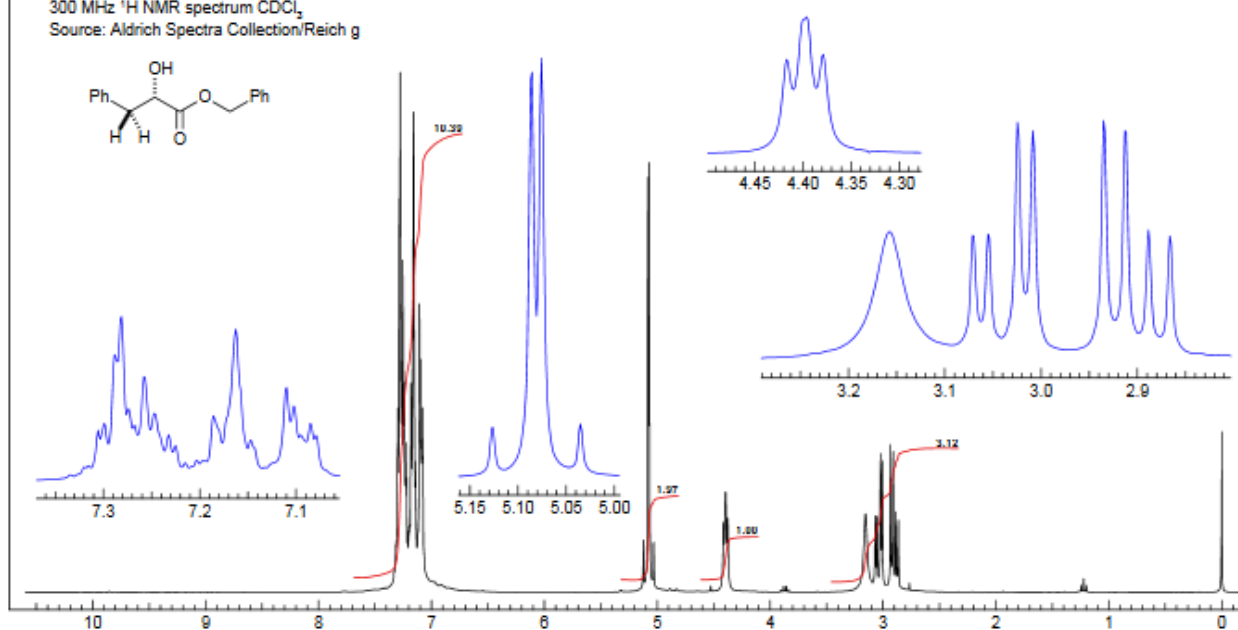
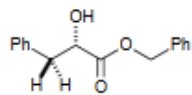
$C_9H_9NO_3$
 ^{13}C NMR Spectrum in $CDCl_3$
Source: Adam Fiedler/Reich



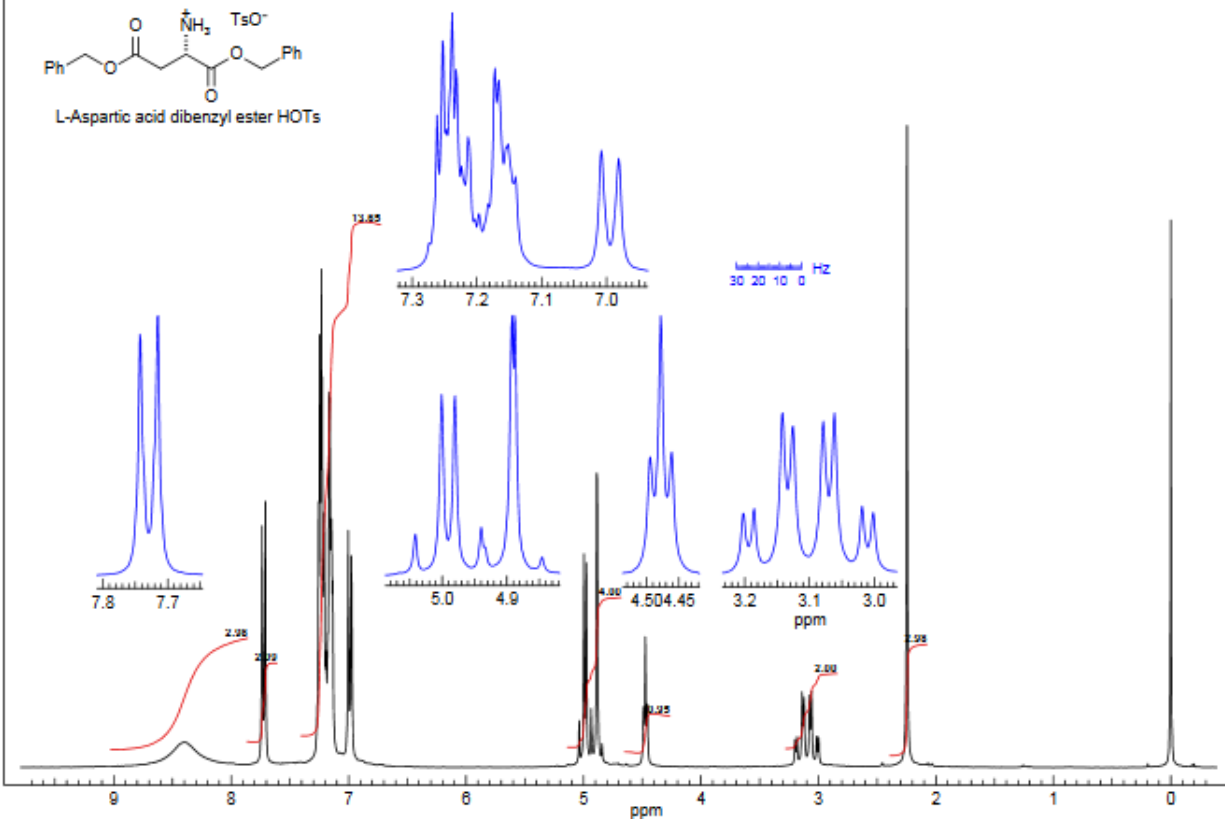
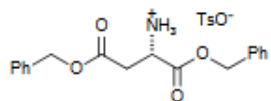
C₁₅H₁₇N
300 MHz ¹H NMR Spectrum in CDCl₃
Source: Aldrich Spectra Collection/Reich g



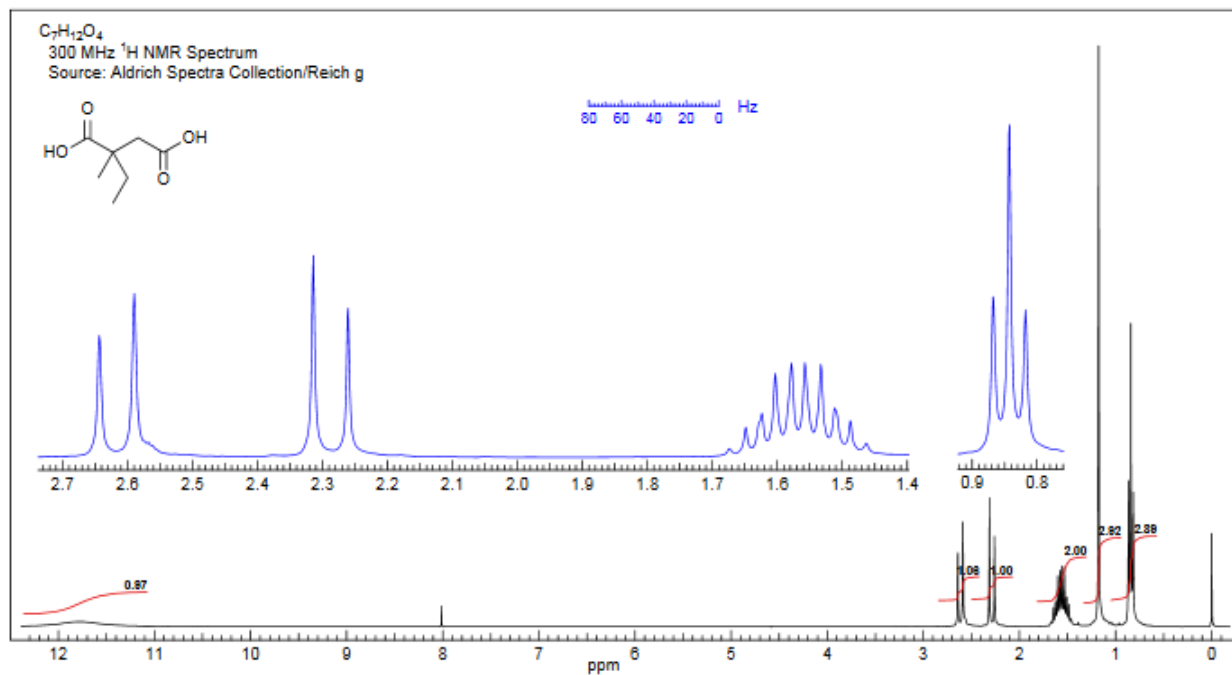
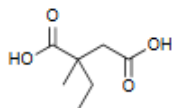
Problem R-12B (C₁₆H₁₆O₂)
300 MHz ¹H NMR spectrum CDCl₃
Source: Aldrich Spectra Collection/Reich g



C₁₂H₁₅NO₄·TsOH
300 MHz ¹H NMR spectrum in CDCl₃
Source: Aldrich Spectra Collection/Reich g



C₇H₁₂O₄
300 MHz ¹H NMR Spectrum
Source: Aldrich Spectra Collection/Reich g



Problem R-09K: C₅H₁₀O₃
300 MHz ¹H NMR spectrum in CDCl₃
Source: Aldrich Spectra Collection/Reich g

